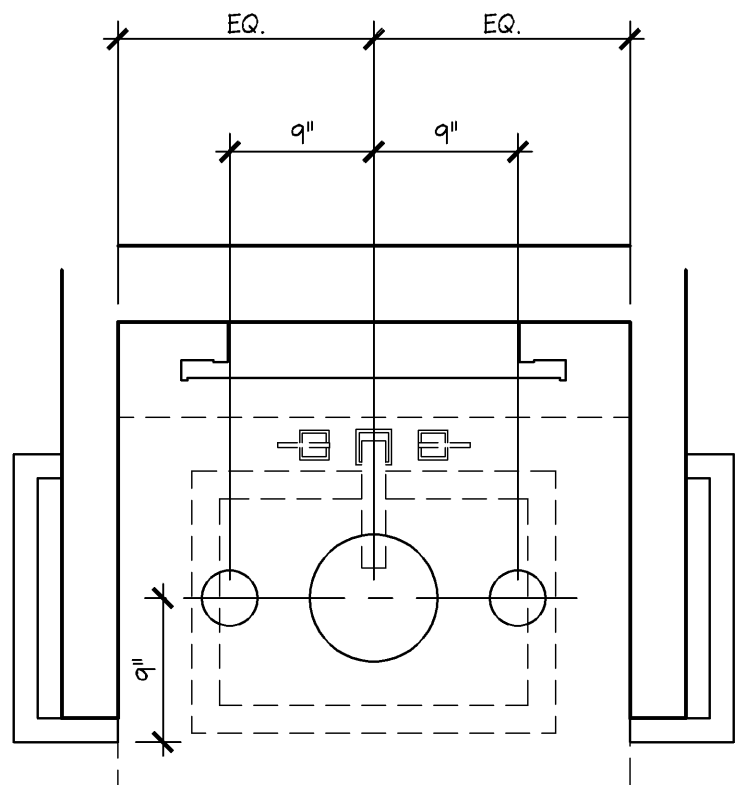


SYMBOL	DESCRIPTION
	RECESSED DOWNLIGHT
	TRACK w/ TRACK HEADS
	FLUORESCENT STRIPS - SURFACE MOUNTED
	FLUORESCENT STRIPS - CHAIN-HUNG FROM STRUCTURE 12'-0" A.F.F.
	MULTI-LAMP RECESSED DOWNLIGHT
	SURFACE MOUNTED FLUORESCENT LIGHT w/ ACRYLIC LENS
	EGRESS SIGNAGE
	EMERGENCY LIGHT
	SPEAKER
	SUPPLY DIFFUSER
	RETURN AIR GRILLE
	CEILING ACCESS PANEL
	EXHAUST AIR REGISTER
	MARKETING RAIL
	PENDANT LIGHT - MOUNTED 7'-6" A.F.F.
	BILLBOARD LIGHT
	CCTV VIEWING MONITOR
	CCTV CAMERA - SUPPLIED AND INSTALLED BY SECURITY VENDOR
	TRAFFIC COUNTER
	SCENT AIR

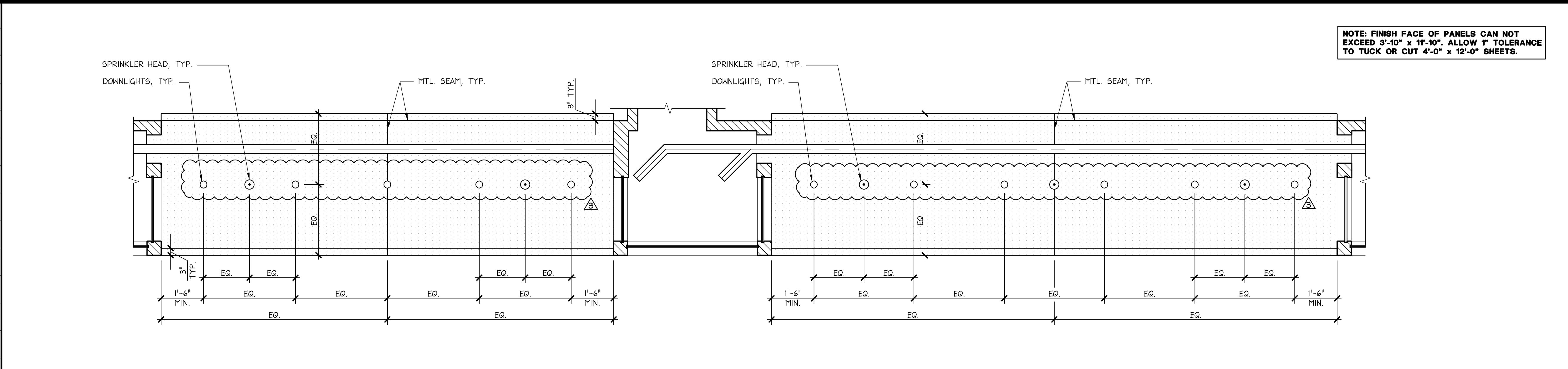
- NOTES:
- ALL CEILING HEIGHTS ARE FROM THE TOP OF FINISH FLOOR TO UNDERSIDE OF FINISH CEILING.
 - PROVIDE ADEQUATE CLEARANCES FOR FIXTURES, DUCTS, CEILINGS, AND RELATED PERTINENT ITEMS NECESSARY TO MAINTAIN THE SPECIFIED HEIGHTS ABOVE FINISH FLOOR.
 - ADDITIONAL HANGER AND SAFETY WIRES FOR LIGHT FIXTURES, SPEAKERS AND DUCTWORK, AS REQUIRED BY LOCAL CODES, TO BE THE RESPONSIBILITY OF THE CEILING SUBCONTRACTOR.
 - SPRINKLER HEAD LAYOUT TO CONFORM TO LOCAL CODE, TAKING IN ACCOUNT LOCATIONS OF DUCTWORK, LIGHTING AND LOCATION OF TENANT'S CABINET, FIXTURE AND SHELVING UNITS.
 - ARCHITECTURAL DRAWINGS DETERMINE LOCATION OF LUMINAIRES AND SUPERSEDE ALL OTHERS, U.O.N.
 - AFTER INSTALLATION, ELECTRICAL CONTRACTOR IS TO TILT THE LAMP IN ALL "T" FIXTURES @ A 45 DEGREE ANGLE TOWARD WALL OR CABINETS.
 - SEE LIGHT FIXTURE SCHEDULE ON ELECTRICAL DRAWINGS FOR FIXTURE MODEL NUMBERS KEYED TO THE LIGHTING AND CEILING LEGEND.
 - NO EMERGENCY LIGHTS, EXIT LIGHTS OR SENSORS ARE TO BE PLACED ON THE PERIMETER SALES WALLS.

CEILING AND LIGHTING LEGEND	1/4" = 1'-0"	R
42L-A041-L01-LGMD		04.26.10

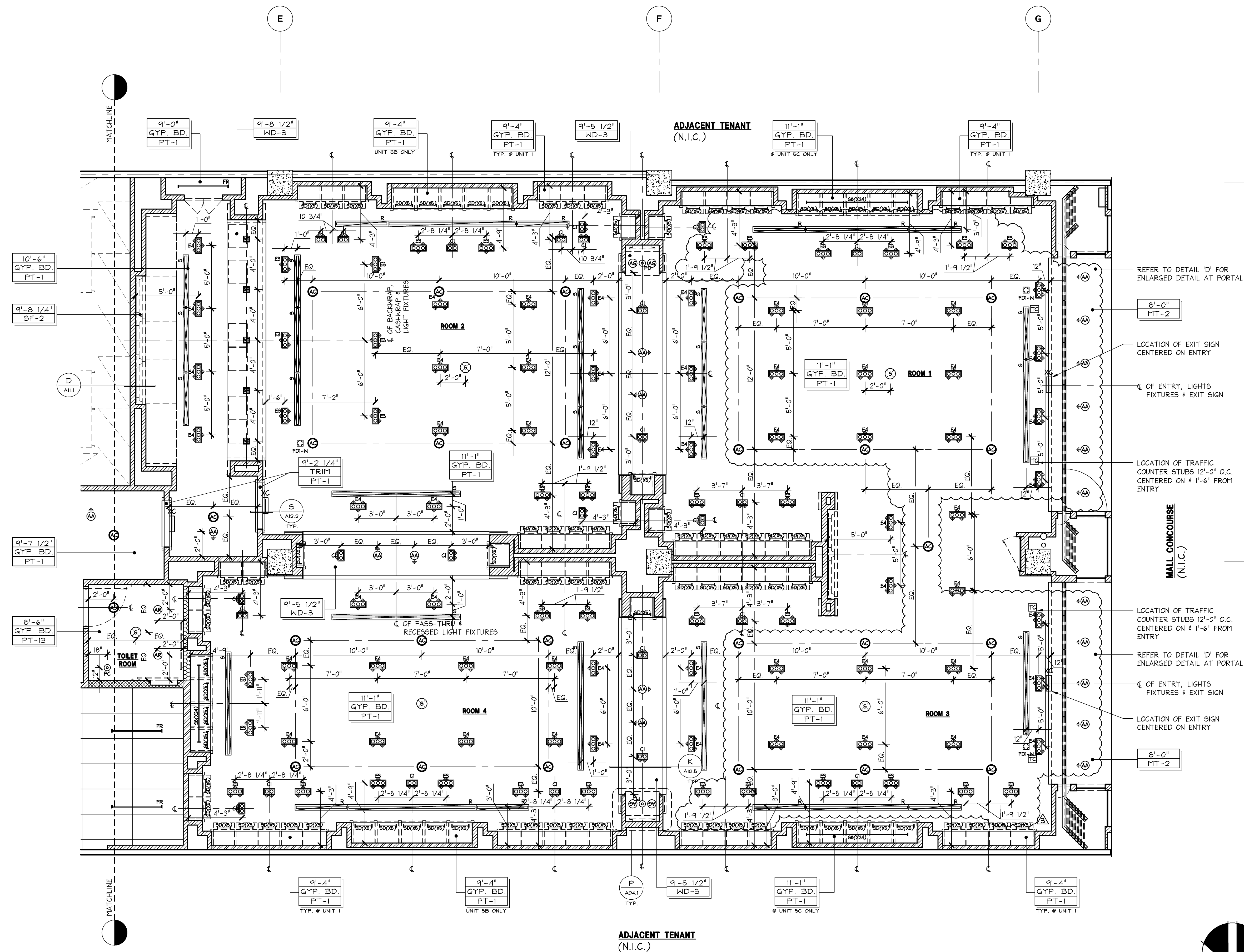


ENLARGED RCP AT ARCHITECTURAL NARROW DEMO SINK	1" = 1'-0"	P
42D-A041-D01-DETL		03.16.12

- SPRINKLER COMMENTS:**
- ALL SPRINKLER WORK (SHOP DRAWINGS) TO BE APPROVED BY LANDLORD'S INSURER. SUBMIT PLANS TO: GLOBAL RISK CONSULTANTS - SEE BELOW.
 - SPRINKLER SYSTEM MUST BE FULLY CHARGED AND OPERATIONAL WHENEVER CONTRACTOR IS NOT ON SITE.
 - SIMON PROPERTY GROUP REQUIRES ALL TENANTS TO USE SIMPLEX GRINNELL FOR ALL SPRINKLER WORK.
 - AT TIME OF BIDDING, TENANT OR T.G.C. SHOULD CONTACT SIMPLEX GRINNELL'S NATIONAL ACCOUNTS REPRESENTATIVE TO OBTAIN DIRECTION FOR PRICING AND SCHEDULING. 800-299-4377 / OPTION #4
 - TENANT OR T.G.C. IS REQUIRED TO CONTRACT WITH AND PAY FOR ALL TENANT SPRINKLER WORK DIRECTLY WITH SIMPLEX GRINNELL.
 - SIMON PROPERTY GROUP REQUIRES ALL TENANTS TO USE LANDLORD'S PRE-QUALIFIED SPRINKLER CONTRACTORS FOR TENANT'S SPRINKLER WORK. TENANT MAY COMPETITIVELY BID TO ONLY THOSE SPRINKLER CONTRACTORS PRE-QUALIFIED BY LANDLORD (CONTACT THAT MALL MANAGER OR OPERATIONS DIRECTOR FOR A LIST PRE-QUALIFIED SPRINKLER CONTRACTORS).
- REFLECTED CEILING PLAN:**
- IF NOT ALREADY EXISTING, TENANT MUST PROVIDE A SEALED PARTITION ABOVE THE STOREFRONT TO SEPARATE THE COMMON AREA CEILING FROM THE TENANT'S SPACE. (SHALL BE RATED IF REQUIRED BY CODE AND ALL PENETRATION SHALL COMPLY AND BE LABELED WITH THE REQUIRED NFPA RATING.)
 - NOTHING IS PERMITTED TO BE ATTACHED TO, SUSPENDED FROM, OR PENETRATE LANDLORD'S STRUCTURE, FLOOR DECK, OR ROOF DECK. TENANTS MAY ATTACH, NONDESTRUCTIVELY, TO OR SUSPEND FROM THE TOP CHORD OF THE JOIST OR THE STRUCTURAL STEEL WHICH EXISTS ABOVE THE TENANT SPACE. WHEN ATTACHING TO LANDLORD'S STRUCTURE, DO NOT DRILL, WELD, SCREW, OR SHOOT INTO STRUCTURE. ALTERNATIVE METHODS OF ATTACHMENT ONLY, NOTHING TO DAMAGE LANDLORD'S BASE BUILDING STRUCTURE. TENANT SHALL PROVIDE SIGNED AND SEALED STRUCTURAL DRAWINGS BY A STRUCTURAL ENGINEER WITH LEGALLY ACTIVE REGISTRATION AS INDICATED BY ALL JURISDICTIONAL REQUIREMENTS, FOR ALL STRUCTURAL MODIFICATIONS FOR LANDLORD RECORDS.
 - ANY LANDLORD EQUIPMENT, COMPONENT, AND / OR SERVICE FEEDING OTHER TENANT(S) THAT IS EXISTING IN THE SPACE MUST REMAIN VISIBLE AND ACCESSIBLE TO THE LANDLORD. TENANT SHALL INSTALL ACCESS PANELS AS REQUIRED TO MAINTAIN ACCESS. ACCESS PANELS SHALL BE LABEL TO PROPERLY IDENTIFY SYSTEM, COORDINATE WITH MALL OPERATIONS
 - SIMON PROPERTY GROUP REQUIRES ALL TENANTS TO USE LANDLORD'S REQUIRED CONTRACTOR FOR ALL SPRINKLER WORK. REFER TO SPRINKLER COMMENTS FOR FURTHER REQUIREMENTS

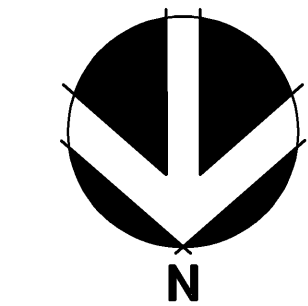


METAL SEAMS @ CANOPY CEILING	1/2" = 1'-0"	D
42D-A041-C01-DETL		11.18.10



- ALL TRACK LIGHTING TO BE CENTERED ON PERIMETER DISPLAY CABINETS**
- FOR TYPICAL GYP. BD. INSTALLATION DETAILS, SEE A/A12.3**

REFLECTED CEILING PLAN



1/4" = 1'-0"	A
42P-A041-A01-PLAN	03.09.11

CONSTRUCTION NOTES:
 THESE DRAWINGS AND SPECIFICATIONS WERE PREPARED FOR USE ON A SPECIFIC SITE. ANY CHANGES TO THESE DRAWINGS OR SPECIFICATIONS SHALL BE MADE WITHOUT THE WRITTEN REPRODUCTION OF THESE DRAWINGS AND SPECIFICATIONS SHALL BE MADE WITHOUT THE WRITTEN REPRODUCTION OF THESE DRAWINGS AND SPECIFICATIONS. ANY CHANGES TO THESE DRAWINGS OR SPECIFICATIONS MUST BE RETURNED TO LSC UPON COMPLETION OF THEIR INTENDED USE. UNLESS OTHERWISE NOTED BY THE LSC.
 THESE DRAWINGS AND SPECIFICATIONS ARE THE PROPERTY OF LSC AND SHALL NOT BE REPRODUCED OR TRANSMITTED IN ANY FORM OR BY ANY MEANS, ELECTRONIC OR MECHANICAL, INCLUDING PHOTOCOPYING, RECORDING, OR BY ANY INFORMATION STORAGE AND RETRIEVAL SYSTEM, WITHOUT THE WRITTEN PERMISSION OF LSC. ANY UNAUTHORIZED REPRODUCTION OR TRANSMISSION OF THESE DRAWINGS OR SPECIFICATIONS MAY RESULT IN LITIGATION.
 THESE DRAWINGS AND SPECIFICATIONS ARE COPYRIGHTED AND SUBJECT TO COPYRIGHT PROTECTION AS AN INTELLECTUAL PROPERTY OF LSC. ANY UNAUTHORIZED REPRODUCTION OR TRANSMISSION OF THESE DRAWINGS OR SPECIFICATIONS MAY RESULT IN LITIGATION.
 THESE DRAWINGS AND SPECIFICATIONS ARE THE PROPERTY OF LSC AND SHALL NOT BE REPRODUCED OR TRANSMITTED IN ANY FORM OR BY ANY MEANS, ELECTRONIC OR MECHANICAL, INCLUDING PHOTOCOPYING, RECORDING, OR BY ANY INFORMATION STORAGE AND RETRIEVAL SYSTEM, WITHOUT THE WRITTEN PERMISSION OF LSC. ANY UNAUTHORIZED REPRODUCTION OR TRANSMISSION OF THESE DRAWINGS OR SPECIFICATIONS MAY RESULT IN LITIGATION.

PROJECT INFORMATION:

24200161

BATH & BODY WORKS

THE GALLERIA II

SPACE INC., 8560
 HOUSTON, TX 77056

REVISIONS:

NO.	DESCRIPTION	DATE
1	BUILDING DEPARTMENT COMMENTS	04/11/14
2	BUILDING DEPARTMENT COMMENTS	05/07/14
3	DESIGN CHANGES/ LANDLORD COMMENTS	06/26/14
4	MASTERS UPDATES	

ELITE CONSTRUCTION GROUP
 LAKE JACKSON, TX
 PHONE: 281-284-1113
 NOTE: THESE PRINTS HAVE BEEN REDUCED BY 50 PERCENT. SCALE WILL BE 50 PERCENT OF WHAT IS NOTED ON PLANS.

DATE ISSUED: 3/7/14
DESIGNED BY: SB
DRAWN BY: JLH
CHECKED BY: RHW

REFLECTED CEILING PLAN

DRAWING NUMBER:
A04.1

24200161

BATH & BODY WORKS

THE GALLERIA II

SPACE INC., 8560
 HOUSTON, TX 77056

REVISIONS:

NO.	DESCRIPTION	DATE
1	BUILDING DEPARTMENT COMMENTS	04/11/14
2	BUILDING DEPARTMENT COMMENTS	05/07/14
3	DESIGN CHANGES/ LANDLORD COMMENTS	06/26/14
4	MASTERS UPDATES	

ELITE CONSTRUCTION GROUP
 LAKE JACKSON, TX
 PHONE: 281-284-1113
 NOTE: THESE PRINTS HAVE BEEN REDUCED BY 50 PERCENT. SCALE WILL BE 50 PERCENT OF WHAT IS NOTED ON PLANS.

DATE ISSUED: 3/7/14
DESIGNED BY: SB
DRAWN BY: JLH
CHECKED BY: RHW

REFLECTED CEILING PLAN

DRAWING NUMBER:
A04.1